

**CH**  
Cooper & Hunter



**CHV 6 CATALOG 2026**



**URBAN**  
**VRF**

R 3 2 S E R I E S



## ABOUT



### COOPER&HUNTER

With more than 25 years of experience in air conditioning and ventilation, Cooper&Hunter has grown into a leading HVAC market player. The brand is dedicated to technological innovation and consumer-driven product development, generating HVAC equipment that adheres to the highest quality standards, providing reliable, energy-efficient, and cost-effective air conditioning solutions.

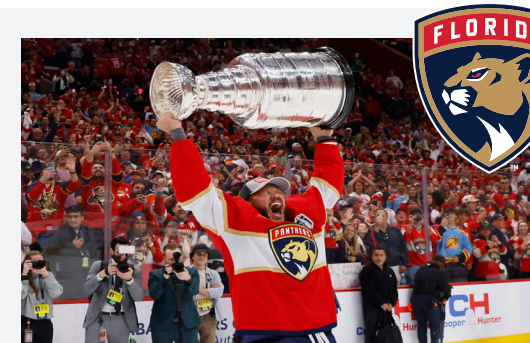
While products under the Cooper&Hunter brand are distributed in more than 55 countries worldwide, the brand's growth within the US market has been rapid. Cooper&Hunter stands out from big-name brands by providing quality support to customers and technicians alike, with their in-house technical support team offering troubleshooting and warranty support Monday through Friday from 9am to 5pm in 5 different languages (including English, Spanish, Mandarin, Russian, and Ukrainian).



© 12.2025 All rights reserved.

### COOPER&HUNTER SPONSORSHIPS

Cooper&Hunter is proud to sponsor the New York Yankees, NASCAR, Florida Panthers, and Miami Zoo because these partnerships reflect our commitment to excellence, innovation, and community engagement. The New York Yankees represent a storied legacy of success and ambition, while NASCAR embodies the thrill of speed and precision engineering—both values we share. Supporting the Florida Panthers aligns with our dedication to teamwork and perseverance, and our partnership with the Miami Zoo highlights our commitment to environmental sustainability and education. Together, these sponsorships allow us to connect with diverse audiences, celebrate shared values, and foster a sense of community across different arenas.



#### Florida Panthers Celebrate Victory!

Once again, Cooper&Hunter has re-newed our Sponsorship Agreement with the Florida Panthers. Just Recently, after a 30-year journey, the Panthers finally etched their name in hockey history, avoiding a collapse after losing three consecutive games. The Florida Panthers clinched their first-ever Stanley Cup title! In a thrilling Game 7 showdown against the Edmonton Oilers, the Panthers secured a hard-fought 2-1 victory.



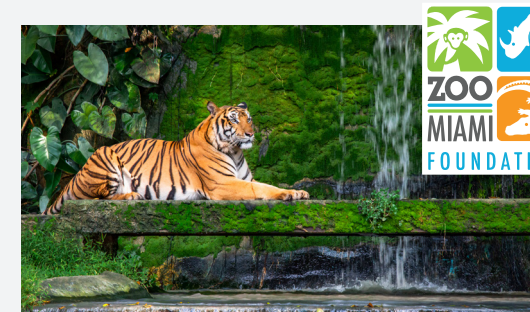
#### HVAC Meets High-Octane!

We are thrilled to continue our sponsorship with MBM Motorsports, a team we deeply admire and respect for their achievements and values. Supporting **Chad Finchum**, an HVAC Technician, Client, and Nascar Driver, who has consistently demonstrated his skills and talent in the sport, is a source of pride for us. We believe this partnership perfectly represents the synergy between HVAC excellence and NASCAR speed.



#### Home Run Collaboration!

Cooper&Hunter is thrilled to announce our renewed sponsorship of the New York Yankees! They did an outstanding job in 2024, winning the East and American leagues again. We are confident that this partnership will continue to thrive in 2025. Our collaboration with the Yankees aligns perfectly with our brand's values of striving for excellence and innovation. We look forward to supporting the team in their future endeavors and continuing to engage with the community through this prestigious partnership.



#### Chilling with Nature!

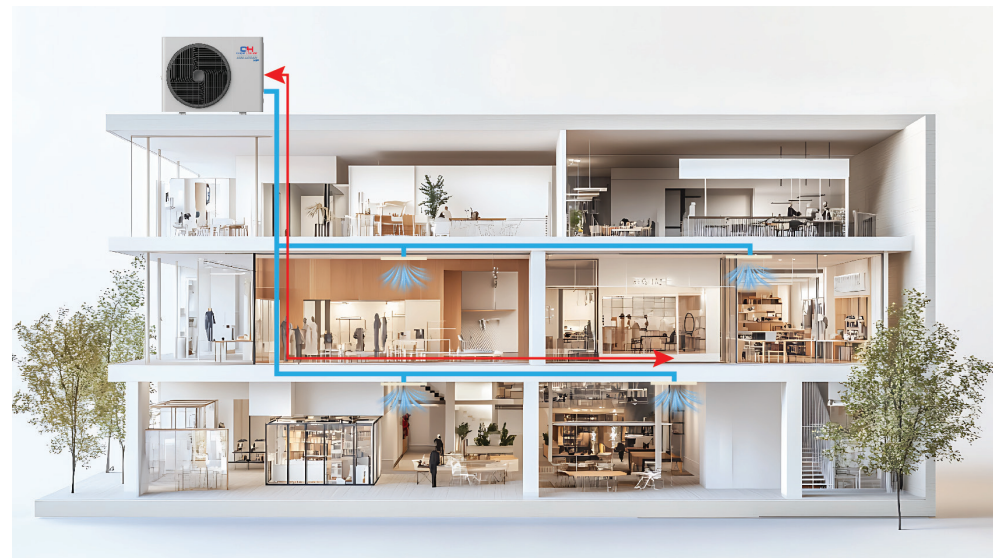
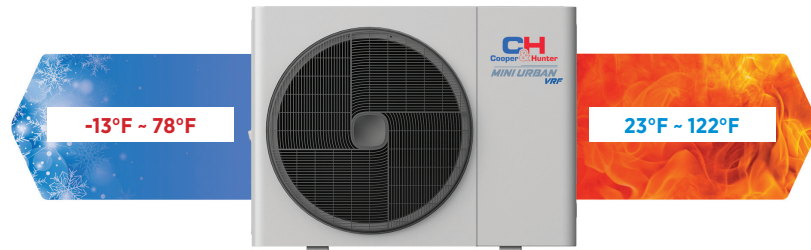
Cooper&Hunter is proud to sponsor the Miami Zoo Foundation, the non-profit partner of Zoo Miami. This sponsorship aligns with Cooper&Hunter's mission to support wildlife conservation, environmental sustainability, and community engagement. Additionally, as HVAC experts, Cooper&Hunter has provided Astoria units for optimal climate control in various animal habitats, ensuring a comfortable and healthy environment for the animals.



Cooper&Hunter CHV6 features the environmentally friendly R32 refrigerant in its VRF systems, offering an ideal solution for meeting CO<sub>2</sub> emission goals. We are determined to become create a sustainable future together with you.

### Features:

- Zero Ozone Depletion Potential (ODP)
- Less charge amount under the same capacity
- Lower Global Warming Potential (GWP)
- Single component refrigerant, easy to handle and recycle
- Refrigerant Leakage Sensor
- Refrigerant Recovery Shut Off Box
- High-efficiency DC Inverter Compressor

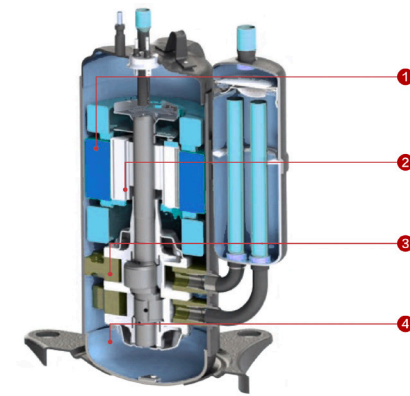


Max height difference between ODU and IDU: **164 ft.**

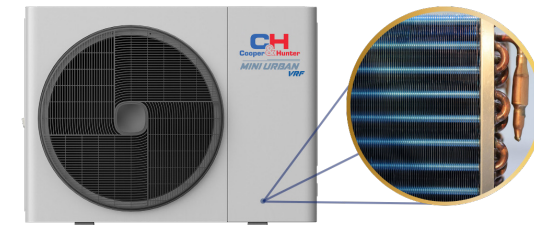
Max height difference between IDUs: **49 ft.**

Note: 131 ft. if the ODU is below the IDU

Max Piping Length: **262 ft.**  
Total Length of Pipes: **590 ft.**



- 1. High-efficiency motor**  
Optimize the motor design to improve compressor performance.
- 2. Optimized rotor design**  
Lower the gravity center of the compressor to reduce vibration and noise
- 3. Flat mechanism design**  
Improve the volumetric efficiency and the total performance.
- 4. Screw interactive fastening**  
Improve fastening effect and reduce deformation of the core.



### Bottom Anti-frosting Structure

To ensure effective frost removal, the heat exchanger circuit extends to the bottom, preventing melted frost from solidifying again as it reaches the condensate drain, which promotes smooth discharge. Additionally, this extension prolongs the frost formation period, extending the defrost interval.

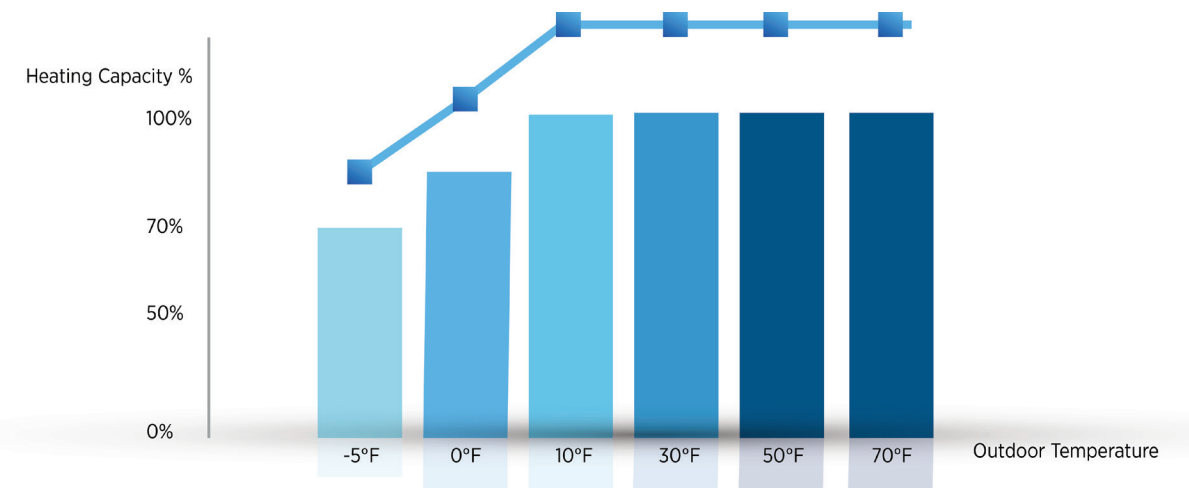
### Wind Guard

By reducing heat transfer with the chilly outdoor air during winter, the **Wind Guard** preserves indoor warmth, curtails energy consumption, diminishes repair expenses, and ensures optimal efficiency and performance.

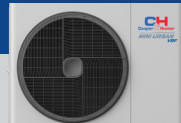


### Reliable Performance in Low Temperatures

The heating capacity of the R32 CHV6 Mini Urban Series keeps stable and consistent at extreme low temperatures, maintaining 70% capacity when the temperature reaches -5°F\*.



\* To ensure 70% heating capacity for 2-3 Ton at the temperature of -5°F, wind shield is required.



## THE R32 CHV6 MINI URBAN SERIES OFFERS EXPANSIVE OPERATIONAL RANGES WITH MORE STABLE PERFORMANCE.

In addition to Optimal performance, the R32 CHV6 Mini Urban Series offers great space efficiency along with cost optimization. Its sleek, light weight and compact form minimizes the space needed, enabling versatile installation even in tight areas.

### STANDARD EFFICIENCY

Model Name			CHV6-RS24URBM	CHV6-RS36URBM	CHV6-RS48URBM
Nominal Tonnage		RTU	2	3	4
Capacity	Cooling	Btu/h	27,000	36,000	48,000
	Heating	Btu/h	27,000	42,000	54,000
Input Power (Ducted/Non-Ducted)		kW	2.09/2.00	3.19/2.86	5.16/4.00
EER (Ducted/Non-Ducted)		Btu/h/W	11.5/12.0	11.3/12.6	9.30/12.0
SEER2 (Ducted/Non-Ducted)		Btu/h/W	18.15/18.15	17.0/23.0	17.0/23.3
Power Supply		V/Ph/Hz	208-230V / 1Ph / 60Hz		
Electrical Parameters	MCA	A	20.9	26.5	30.0
	MOP	A	30	40	45
Max Connectable Indoor Units		Qty	4	9	11
Sound Pressure Level (Cooling/Heating)		dB(A)	49/51	52/54	53/55
Dimensions	H		33.70	33.70	33.70
	W		43.31	43.31	43.31
	D		15.35	15.35	15.35
Connection Pipe Diameter	High/Low Pressure Gas Pipe	in.	5/8	5/8	5/8
	Liquid Pipe		3/8	3/8	3/8
Refrigerant			R32		
Compressor			Rotary		
Compressor Quantity		PC	1	1	1
Weight	Net Weight	lbs.	190	202	202
	Gross Weight		224	235	235
Piping Design	Height Diff between ODU and IDU	ft.	164		
	Height Diff between IDUs		49.0		
	Total Pipe Length		590		
	Max Piping Length		262		
Operation Range	Cooling	°F	23-122		
	Heating	°F	-13-78		

### HYPER HEAT EFFICIENCY

Model Name			CHV6-RS36URBMHH	CHV6-RS48URBMHH	CHV6-RS60URBMHH
Nominal Tonnage		RTU	3	4	5
Capacity	Cooling	Btu/h	36,000	48,000	60,000
	Heating	Btu/h	42,000	54,000	63,000
EER (Ducted/Non-Ducted)		Btu/h/W	11.5/12.5	11.0/12.0	10.5/11.0
SEER2 (Ducted/Non-Ducted)		Btu/h/W	17.5/22.5	17.5/22.0	17.0/21.5
Power Supply		V/Ph/Hz	208-230V / 1Ph / 60Hz		
Electrical Parameters	MCA	A	29.7	39.6	41.8
	MOP	A	40	50	60
Max Connectable Indoor Units		Qty	9	11	12
Sound Pressure Level (Cooling/Heating)		dB(A)	50/53	52/54	57/58
Dimensions	H		54.34	54.34	54.34
	W		37.40	37.40	37.40
	D		14.56	14.56	14.56
Connection Pipe Diameter	High/Low Pressure Gas Pipe	in.	5/8	5/8	5/8
	Liquid Pipe		3/8	3/8	3/8
Refrigerant			R32		
Compressor			Rotary		
Compressor Quantity		PC	1	1	1
Weight	Net Weight	lbs.	240	254	258
	Gross Weight		271	276	280
Piping Design	Height Diff between ODU and IDU	ft.	164		
	Height Diff between IDUs		49.0		
	Total Pipe Length		590		
	Max Piping Length		279		
Operation Range	Cooling	°F	23-131		
	Heating	°F	-13-78		

Note:  
 1. Rated cooling capacity and rated heating/low temp. heating capacity are tested in the following conditions:  
 Cooling Operation Conditions - Indoor Air Inlet Temp: 80°F DB, 67°F WB / Outdoor Air Inlet Temp: 95°F DB  
 Heating Operation Conditions - Indoor Air Inlet Temp: 70°F DB / Outdoor Air Inlet Temp: 47°F DB, 43°F WB  
 Low Temp. Heating Operation Conditions - Indoor Air Inlet Temp: 70°F DB / Outdoor Air Inlet Temp: 17°F DB, 15°F WB  
 2. The sound pressure level is measured in an anechoic chamber so that reflected echo should be taken into consideration in the field.

# R32 CHV6 URBAN VRF



## THE R32 TOP DISCHARGE CHV6 URBAN SERIES

Single chassis unit from 6 to 20 Ton.  
Combinations up to 40 Ton.

Model Name			CHV6-RS072URB	CHV6-RS096URB	CHV6-RS120URB
Tonnage			6	8	10
Power Supply			AC3Ø 208/230V/60Hz		
Cooling	Capacity	kW	20.2	27	33.4
		kBtu/h	69	92	114
	EER (Ducted/Non-ducted)	(Btu/h)W	11.80/12.2	11.90/11.80	11.80/11.80
	IEER (Ducted/Non-ducted)	(Btu/h)W	19.00/21.00	19.30/22.10	18.90/21.60
Heating	Capacity	kW	21.98	29.31	36.93
		kBtu/h	75	100	126
	COP 47°F (Ducted/Non-ducted)	kW kW	3.55/3.78	3.40/3.50	3.50/3.46
SCHE (Ducted/Non-Ducted)		Btu/h/W	14.41/21.45	14.30/21.34	14.63/21.56
Ventilation	Air Flow Rate	m <sup>3</sup> /min	177	177	225
		CFM	6,249	6,249	7,946
	Fan Quantity	PC	1	2	2
Sound	Sound Pressure Level	dB(A)	57	59	61
Compressor	Type	-	Enhanced Vapor Injection Scroll Compressor		
	Compressor Quantity	PC	1	1	2
Refrigerant	Type	-	R32		
	Pre-Charged Amount	lbs.	16.8	21.4	27.8
Weight	Net Weight	lbs	593	705	880
Dimensions	External (HxWxD)	in.	70-55/64×37-1/64×32-31/64	70-55/64×54-23/32×32-31/64	70-55/64×54-23/32×32-31/64
	Packaging (HxWxD)	in.	77-11/64×39-3/8×34-27/32	77-11/64×57-3/32×34-27/32	77-11/64×57-3/32×34-27/32
Heat Pump Operation System	Gas Line	in.	3/4	7/8	1-1/8
	Liquid Line	in.	3/8	3/8	1/2
Heat Recovery Operation System	High Pressure Gas Line	in.	5/8	3/4	3/4
	Low Pressure Gas Line	in.	3/4	7/8	1-1/8
	High/Low Pressure Gas Line	in.	5/8	3/4	7/8
	Liquid Line	in	3/8	3/8	1/2
Max Connectable Indoor Units	Quantity	PC	128		
Piping Design	Height Difference Between IDUs and ODUs	ft.	361		
	Height Difference Between IDUs		131		
	Max Piping Length		772		
	Total Pipe Length		3609		
Operation Range	Cooling	°F	5°F DB - 131°F DB		
	Heating	°F	-22°F WB - 86°F DB		

CHV6-RS144URB	CHV6-RS168URB	CHV6-RS192URB	CHV6-RS216URB	CHV6-RS240URB
12	14	16	18	20
AC3Ø 208/230V/60Hz				
40.4	46.9	53.9	60.4	66.8
138	160	184	206	228
10.90/10.90	10.90/11.20	10.90/10.90	9.90/10.90	10.90/10.90
18.10/21.50	18.00/20.40	18.00/20.40	18.00/19.20	18.00/18.90
43.96	49.82	58.62	64.48	73.27
150	170	200	220	250
3.30/3.30	3.30/3.30	3.30/3.30	3.30/3.30	3.30/3.30
22.10/25.60	22.30/25.60	22.80/26.60	21.90/25.50	21.80/25.60
258	317	317	408	408
9,117	11,200	11,200	14,406	14,406
2	2	2	2	2
61	62	63	66	67
Enhanced Vapor Injection Scroll Compressor				
2	2	2	2	2
R32				
27.8	27.8	27.8	34.2	34.2
880	880	880	1,168	1,168
70-55/64×54-23/32×32-31/64	70-55/64×54-23/32×32-31/64	70-55/64×54-23/32×32-31/64	70-55/64×74-1/64×32-31/64	70-55/64×74-1/64×32-31/64
77-11/64×57-3/32×34-27/32	77-11/64×57-3/32×34-27/32	77-11/64×57-3/32×34-27/32	77-11/64×76-3/8×34-27/32	77-11/64×76-3/8×34-27/32
1-1/8	1-1/8	1-1/8	1-1/8	1-1/8
1/2	1/2	1/2	1/2	5/8
3/4	7/8	7/8	7/8	7/8
1-1/8	1-1/8	1-1/8	1-1/8	1-1/8
7/8	7/8	7/8	1-1/8	1-1/8
1/2	1/2	1/2	1/2	5/8
128				
361				
131				
772				
3609				
5°F DB - 131°F DB				
-22°F WB - 86°F DB				

Notes:  
 1. Rated cooling capacity and rated heating capacity are tested in the following conditions: Cooling Conditions: indoor air inlet temperature: 80°F DB 66°F WB, outdoor air inlet temperature: 95°F DB, pipe length: 24.6ft, pipe height difference: 0ft. Heating Conditions: indoor air inlet temperature: 68°F DB, outdoor air inlet temperature: 45°F DB 43°F WB, pipe length: 24.6ft, pipe height difference: 0ft.  
 2. The above noise values are measured in the anechoic chamber without reflected echo, therefore the impact of the reflected echo must be included at the scene. Measurement point: 1m from the service cover surface and 4.9ft from the floor level.  
 3. When the connection ratio is lower than 50% or higher than 130%, please consult our local technical engineers.



## Indoor Unit Feature Overview

☑ = Standard ☐ = Optional X = Incompatible

	IDU	4-WAY CASSETTE	MINI 4-WAY CASSETTE	MULTI POSITION AIR HANDLER	DUCTED CEILING	WALL MOUNTED
ACCESSORIES	DRAIN PUMP (BUILT-IN)	☑	☑	X	☑	X
	FILTER	☑	☑	☑	☑	☑
	HUMIDITY SENSOR	☑	☑	☑	☑	☑
	MOTION SENSOR	☐	☐	X	X	X
	HI-MOTION	☐	☐	☐	☐	☐
	OUTLET AIR TEMP SENSOR	☑	☑	X	X	☑
	FLOAT SWITCH	☑	☑	X	☑	X
	REFRIGERANT DETECTOR	☑	☑	☑	☑	☐
FEATURES	DRY CONTACT INPUT	☑	☑	☑	☑	☑
	DRY CONTACT OUTPUT	☑	☑	☑	☑	☑
	WINDOWS LINKAGE	☑	☑	☑	☑	☑
	FRESH AIR INTAKE	☑	☑	X	☑	X
	SLEEP MODE	☑	☑	☑	☑	☑
	QUIET MODE	☑	☑	X	☑	☑
	ECO MODE	☑	☑	☑	☑	☑
	BREEZE MODE	☑	☑	☑	X	X
	INDIVIDUAL LOUVER CONTROL	☑	☑	X	X	X
	SELF CLEANING	☑	☑	☑	☑	☑
	AUTO FAN SPEED	☑	☑	☑	☑	☑

## Comfort, Health and Convenience

- Built-In R32 Refrigerant Sensor
- Refrigerant Leak Detection and Alarm Recovery function
- Built-In Humidity Sensor, temperature and humidity dual control
- Comfort Cooling function - adjustable to 3 temperature levels
- Motion Sensor - automatically adjusts whether to direct airflow towards people or not
- Support 1° adjustment, for less temperature fluctuation
- MERV 8 Filter screen accessories
- Self-Cleaning function
- Implement main sub control of master and slave machines
- Setback function
- Third party heat source linkage function

### For MPAHU

- The four directions are installed (up/down/left/right), Convenience of installation
- A variety of alarm signal output: PCB output alarm signal to alarm, wired controller alarm
- Dc motor, maximum static pressure 0.8 in. WG, 6 wind speed, efficient and energy-saving
- Built-in 24v thermostat interface



## GENERAL FEATURES & FUNCTIONS

4-WAY CEILING CASSETTE  
4-WAY MINI CEILING CASSETTE

SLIM DUCTS LOW STATIC PRESSURE  
SLIM DUCTS HIGH STATIC PRESSURE

WALL MOUNTS\*  
MULTI-POSITION AIR HANDLER UNIT



### 48-INCH DRAINAGE HEIGHT

Some CHV indoor models are equipped with a drain pump to pull condensation upward and remove water from the units with a drainage height of up to 48 inches.



### SELF DIAGNOSIS

CHV indoor units use the self-diagnosis function to monitor and analyze malfunctions. Error codes are displayed on LED displays, remote controllers, or PCB boards as a general troubleshooting guide.



### COMPACT SIZE

Compact indoor units can be conveniently transported and installed, even in small spaces.



### REMOTE CONTROL

Indoor units can be controlled with wireless remote controller featuring an LCD display.



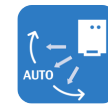
### SILENT OPERATION

CHV units create minimal sound pressure during operation.



### ADJUSTABLE LOUVER POSITION

CHV indoor units feature adjustable louvers for more precise directional air flow.



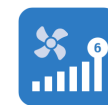
### SWING LOUVER

CHV ceiling cassettes and wall mounts include louvers which swing automatically for even air distribution.



### 3D AIR FLOW PANEL (OPTIONAL)

The optional 3D air-flow panel, which includes an LED display and adjustable horizontal and vertical louvers, enables system control with a Cooper&Hunter wireless remote controller.



### FAN SPEED

All CHV indoor units have 6 selectable fan speeds.



### AUTO FAN SPEED

Fan speed rotation is automatically controlled to achieve optimum efficiency and comfort.



### EASY MAINTENANCE

CHV indoor units provide convenient access to filters and other important components for easy upkeep and increased longevity.



### WIDE CAPACITY RANGE

CHV indoor units come in a wide range of capacities across 5 different indoor model types.



### AUTO RESTART

The automatic restart function sets the indoor units to automatically restart and resume previous settings in the event of a power outage.



### LOW TEMPERATURE COOLING

The target temperature of indoor units can be set as low as 60°F.



### WiFi ADAPTER (OPTIONAL)

An optional WiFi adapter can be installed to enable system control via iOS or Android smart device for up to 64 indoor units.



### WIRELESS RECEIVER

Indoor units can be controlled via C&H wireless remote controller when a wireless receiver is installed. CHV wall mounts include a wireless receiver, but it is an optional accessory for other model types.



### HUMIDITY SENSOR (OPTIONAL)

The optional humidity sensor allows access to more precise dehumidification control.



### SMART HUMAN MOTION SENSOR

Intelligent motion sensing technology enables auto ON/OFF, auto fan, and auto temperature adjustments based on movement and occupancy of the room.



### FRESH AIR INTRODUCTION

Fresh air can be directed into rooms with an optional adapter or direct connection to the air return segment of the unit.



### STANDARD FILTER INCLUDED

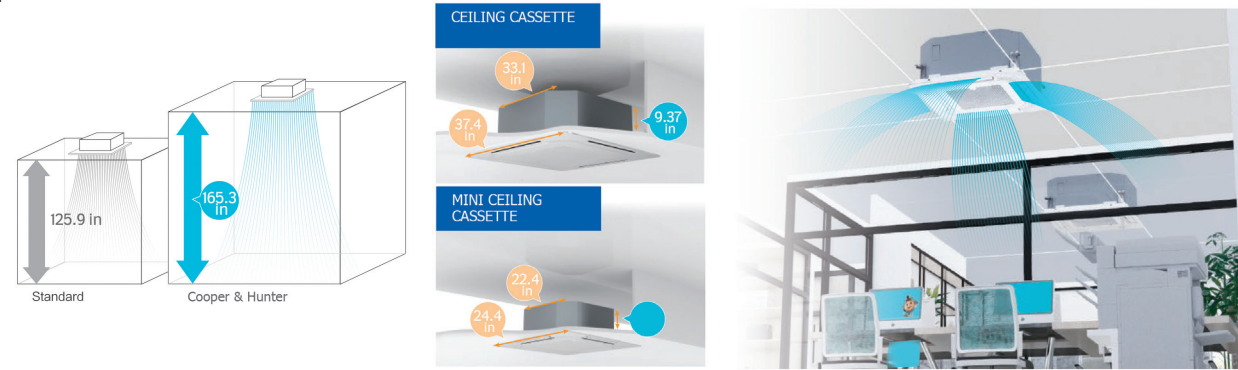
A washable, long-life filter is included as a standard part.

\*Wall Mounts do not include Built-In R32 Refrigerant Sensor.



### CONVENIENT DESIGN / SUITABLE FOR HIGH CEILINGS

The 4-way Ceiling Cassette, available in 9.37 in and 8.46 in models, features a sophisticated design which fits in standard ceiling grids. CHV ceiling cassettes can be installed up to 13.78 ft high without interfering with airflow or air conditioning capabilities.



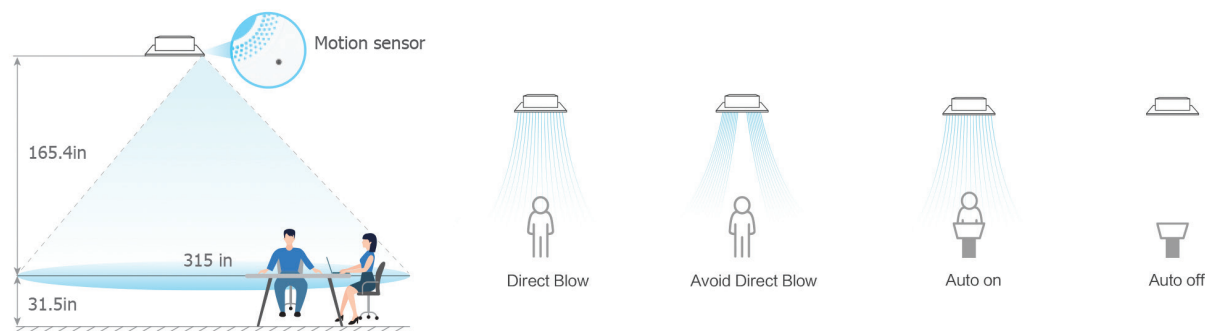
### PRECISE LOUVER CONTROL

The louvers of CHV ceiling cassettes can be controlled individually with 6 angle settings and a maximum reach angle of 64°.



### CEILING CASSETTE MOTION SENSOR

The smart motion sensor can be utilized for a variety of purposes. For example, it can automatically turn the unit on/off or direct the airflow towards or away from people, depending on the control settings. Additionally, in heavy-traffic times or areas, the temperature can automatically adjust to maintain a comfortable indoor climate.



Accessories Standard Cassettes										
Wired Controllers			Wireless Controller	Central Controller	Decoration Panel	Receiver Kit	Motion Sensor	Humidity Sensor	WIFI Adapter	Fresh Air Duct Adapter
SPWT-A01	SPWT-B01	SPWT-WG01	SPRC-101	SPCC-D10	SHP-G-NK	SPWRK-T03	SPHNS-01E	SPHDS-S01E	SPHM-64M	SPFA2.64



Model Name			CHV-RS09SCC4W	CHV-RS12SCC4W	CHV-RS15SCC4W	CHV-RS19SCC4W	CHV-RS24SCC4W
Capacity	Cooling	Btu/h	9,600	12,300	15,300	19,100	24,200
	Heating	Btu/h	10,900	13,700	17,000	21,500	27,300
Input Power		W	20	30	40	50	60
Power Supply		V/Ph/Hz	208-230V / 1Ph / 60Hz				
Electrical Parameters	MCA	A	0.25	0.38	0.54	0.63	0.69
	MOP	A	15	15	15	15	15
Airflow Rate		CFM	310/353/381/424/452/529	321/381/416/452/494/600	370/402/445/490/529/670	370/416/445/490/529/670	519/558/635/674/741/953
Sound Pressure Level		dB(A)	26/26/27/28/28/30	26/27/28/29/29/32	26/27/29/29/31/33	26/28/28/30/31/34	28/29/31/32/33/36
Dimensions (H x W x D)		in.	9.69x33.06x33.06	9.69x33.06x33.06	9.69x33.06x33.06	9.69x33.06x33.06	9.69x33.06x33.06
Decoration Panel		in.	1.84x37.41x37.41				
Weight		lbs.	44.1	44.1	44.1	44.1	47.4
Connection Pipe Diameter	Liquid	in.	1/4	1/4	1/4	1/4	3/8
	Gas	in.	1/2	1/2	1/2	1/2	5/8
	Drain	in.	1 1/4	1 1/4	1 1/4	1 1/4	1 1/4

Model Name			CHV-RS30SCC4W	CHV-RS38SCC4W	CHV-RS48SCC4W	CHV-RS54SCC4W
Capacity	Cooling	Btu/h	30,700	38,200	47,800	54,600
	Heating	Btu/h	34,100	42,700	54,600	61,400
Input Power		W	70	80	130	130
Power Supply		V/Ph/Hz	208-230V / 1Ph / 60Hz			
Electrical Parameters	MCA	A	0.70	0.80	1.5	1.5
	MOP	A	15	15	15	15
Airflow Rate		CFM	540/597/646/718/787/883	724/830/918/1013/1041/1394	791/854/960/1045/1183/1306	840/904/1,020/1084/1200/1306
Sound Pressure Level		dB(A)	30/31/33/35/36/37	33/34/36/38/40/42	34/36/38/40/44/46	36/38/40/41/44/46
Dimensions (H x W x D)		in.	9.69x33.06x33.06	11.31x33.06x33.06	11.31x33.06x33.06	11.31x33.06x33.06
Decoration Panel		in.	1.84x37.41x37.41			
Weight		lbs.	51.8	57.3	57.3	57.3
Connection Pipe Diameter	Liquid	in.	3/8	3/8	3/8	3/8
	Gas	in.	5/8	5/8	5/8	5/8
	Drain	in.	1 1/4	1 1/4	1 1/4	1 1/4

Bacnet	CH-Checker	Shut-Off Box
SPBN-H160	SPHCH-64	SPRSOB-RS15

- The nominal cooling capacity and heating capacity are based on the following conditions: Cooling Operation Conditions, Indoor Air Inlet Temperature: 80°F DB, 66°F WB, Outdoor Air Inlet Temperature: 95°F DB Piping Length: 24.6ft, Piping Lift: 0ft Heating Operation Conditions, Indoor Air Inlet Temperature: 68°F DB, Outdoor Air Inlet Temperature: 44°F DB, 42°F WB
- The sound pressure level is based on the following conditions: 4.9ft beneath the unit. The above data was measured in an anechoic chamber so that the reflected sound should be taken into consideration in the field
- The actual appearance of outdoor units may differ from photos.
- Specifications are subject to change without notice.

# CEILING CASSETTES



## 4 WAY MINI CEILING CASSETTE



Model Name			CHV-RS05MCC4W	CHV-RS07MCC4W	CHV-RS09MCC4W	CHV-RS12MCC4W	CHV-RS15MCC4W	CHV-RS17MCC4W	CHV-RS19MCC4W
Capacity	Cooling	Btu/h	5,100	7,500	9,600	12,300	15,300	17,000	19,100
	Heating	Btu/h	6,800	8,500	11,220	14,300	17,000	19,100	21,500
Input Power		W	14	14	14	16	22	30	40
Power Supply		V/Ph/Hz	208-230V / 1Ph / 60Hz						
Electrical Parameters	MCA	A	0.19	0.19	0.19	0.20	0.29	0.38	0.49
	MOP	A	15						
Airflow Rate		CFM	256/232/220/199	256/232/220/199	280/256/232/208	292/256/232/208	333/213/252/238	393/339/312/252	446/387/333/286
Sound Pressure Level		dB(A)	30/29/28/26	30/29/28/26	32/30/28/26	34/32/29/26	38/36/31/28	42/39/36/31	45/42/38/34
Dimensions (H x W x D)		in.	8.47x22.44x22.44						
Decoration Panel		in.	1.44x24.44x24.44						
Weight		lbs.	32	32	32.6	32.6	34.8	34.8	34.8
Connection Pipe Diameter	Liquid	in.	1/4						
	Gas	in.	1/2						
	Drain	in.	1 1/4						

Accessories Mini Cassettes										
Wired Controllers			Wireless Controller	Central Controller	Decoration Panel	Receiver Kit	Motion Sensor	Humidity Sensor	WIFI Adapter	Fresh Air Duct Adapter
SPWT-A01	SPWT-B01	SPWT-WG01	SPRC-101	SPCC-D10	SHPE-D-NK	SPWRK-Z01	SPHNS-MACN	SPHDS-S01E	SPHM-64M	SPFA2.64

Bacnet	CH-Checker	Shut-Off Box	<ol style="list-style-type: none"> <li>The nominal cooling capacity and heating capacity are based on the following conditions: Cooling Operation Conditions, Indoor Air Inlet Temperature: 80°F DB, 66°F WB, Outdoor Air Inlet Temperature: 95°F DB, Piping Length: 24.6ft, Piping Lift: 0ft, Heating Operation Conditions, Indoor Air Inlet Temperature: 68°F DB, Outdoor Air Inlet Temperature: 44°F DB, 42°F WB</li> <li>The sound pressure level is based on the following conditions: 4.9ft beneath the unit. The above data was measured in an anechoic chamber so that the reflected sound should be taken into consideration in the field</li> <li>The actual appearance of outdoor units may differ from photos.</li> <li>Specifications are subject to change without notice.</li> </ol>
SPBN-H160	SPHCH-64	SPRSOB-RS15	



# WALL MOUNTS

## WALL UNITS

### HIGH EFFICIENCY DC FAN MOTOR

The DC fan motor provides low-cost operation with a minimum power consumption as low as 20W, which is approximately 60% less than conventional air conditioning options.

### QUIET OPERATION

Super silent DC fan motors and EEVs ensure quiet operation of C&H wall mounted units. Sleep Mode and Silent Mode can also be utilized for further noise reduction.

### 6 FAN SPEEDS

6 indoor fan speeds are available to meet a variety of needs.

### SELF-CLEAN FUNCTION

CHV wall mounts have a Self-Clean function which dries the coil to eliminate build-up of dust, mildew, and other airborne particles.



Model Name			CHV-RS07WTU	CHV-RS09WTU	CHV-RS12WTU	CHV-RS15WTU	CHV-RS19WTU	CHV-RS24WTU	CHV-RS28WTU
Capacity	Cooling	Btu/h	7,500	9,600	12,300	15,400	19,100	24,200	28,700
	Heating	Btu/h	8,500	11,300	13,700	17,100	21,500	27,300	28,700
Input Power		W	20	20	30	20	30	50	80
Power Supply		V/Ph/Hz	208-230V / 1Ph / 60Hz						
Electrical Parameters	MCA	A	0.36	0.36	0.43	0.45	0.45	0.75	0.81
	MOP	A	15						
Airflow Rate		CFM	347/323/305/288/264/247	347/323/305/288/264/247	364/323/305/288/264/247	406/389/365/318/306/283	571/530/501/471/430/406	707/636/601/530/471/412	824/777/707/601/501/430
Sound Pressure Level		dB(A)	36/35/33/32/30/28	36/35/33/32/30/28	38/35/33/32/30/28	38/37/36/32/31/29	40/38/36/35/33/31	45/42/41/38/35/31	50/48/45/41/36/33
Dimensions (H x W x D)		in.	10.63x33.27x8	10.63x33.27x8	10.63x33.27x8	12.34x37.80x9.06	12.34x44.09x9.06	12.34x44.09x9.06	12.34x44.09x9.06
Weight		lbs.	20.9	20.9	20.9	28.7	31.7	31.7	31.7
Connection Pipe Diameter	Liquid	in.	1/4	1/4	1/4	1/4	3/8	3/8	3/8
	Gas	in.	3/8	3/8	3/8	1/2	5/8	5/8	5/8
	Drain	in.	VP16						

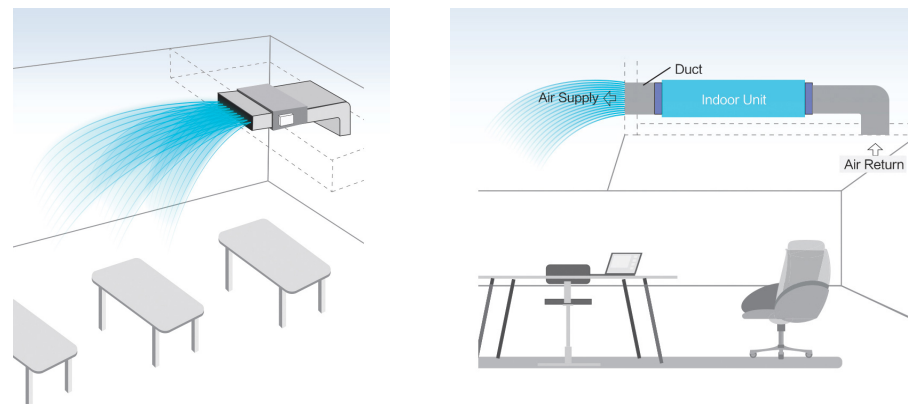
Accessories Wall Mount Unit										
Wired Controllers			Wireless Controller	Central Controller	Motion Sensor	WIFI Adapter	Bacnet	CH-Checker	Shut-Off Box	Refrigerant Detector
SPWT-A01	SPWT-B01	SPWT-WG01	SPRC-101	SPCC-D10	SPHNS-S01E	SPHM-64M	SPBN-H160	SPHCH-64	SPRSOB-RS15	SPRD-RS01

- The nominal cooling capacity and heating capacity are based on following conditions: The above data was measured in an anechoic chamber so that reflected sound should be taken into consideration in the field. Cooling Operation Conditions Indoor Air Inlet Temperature: 80°F DB, 66°F WB Outdoor Air Inlet Temperature: 95°F DB
- Heating Operation Conditions Indoor Air Inlet Temperature: 68°F DB, Outdoor Air Inlet Temperature: 44°F DB, 42°F WB Piping Length: 2.6ft. Piping Lift: 0ft. The sound pressure level is based on following conditions: 2.6ft.(0.8m) below the unit and 3.3ft.(1m) in front of the unit. The above noise values are measured under the condition of air supply.
- The actual appearance of outdoor units may differ from photos.
- Specifications are subject to change without notice.



### ADJUSTABLE STATIC PRESSURE AND IMPROVED AIR QUALITY

The static pressure of the slim duct fan can be adjusted to suit various noise and air flow needs. Fresh air supply and filters ensure improved air quality.



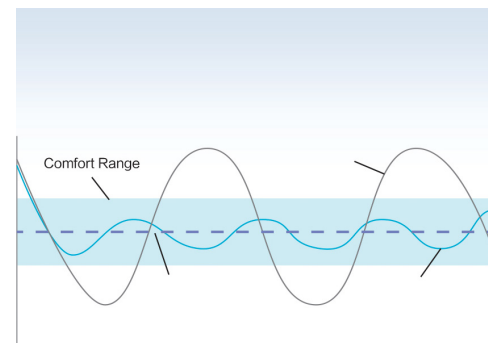
### 3D AIR FLOW PANEL (OPTIONAL)

The optional 3D air-flow panel, which includes an LED display and adjustable horizontal and vertical louvers, enables system control with a Cooper&Hunter wireless remote controller and the capability for more precise directional air flow.



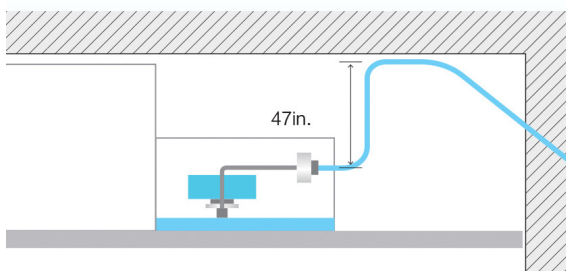
### TEMPERATURE PRECISION

CHV slim ducted units include 3 temperature sensors to prevent overcooling or overheating of the room. The sensors send real-time signals to the unit for more accurate temperature supply.



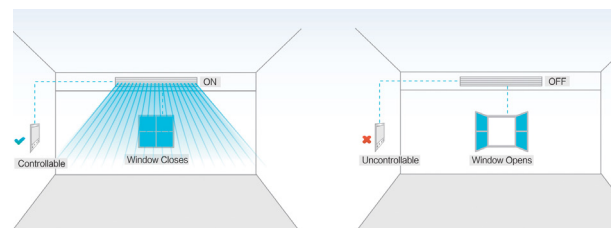
### DRAIN PUMP

CHV low static pressure slim ducts include a standard drain pump and a maximum drain height of 47 inches. Internal and external drain pumps are optional accessories available for high static pressure slim ducts.



### DEVICE CONNECTION OPTIONS

Third party building management systems and sensors can be connected to the indoor unit via dry contacts. Devices such as hotel room key card, window contact and fire alarm can be connected at the same time.



Model Name			CHV-RS05SDLSP	CHV-RS07SDLSP	CHV-RS09SDLSP	CHV-RS12SDLSP	CHV-RS15SDLSP	CHV-RS19SDLSP	CHV-RS24SDLSP
Capacity	Cooling	Btu/h	5,800	7,500	9,600	12,300	15,300	19,100	24,200
	Heating	Btu/h	6,500	8,500	11,300	13,600	17,100	21,500	27,300
Input Power		W	30	30	50	50	60	60	90
Power Supply		V/Ph/Hz	208-230V / 1Ph / 60Hz						
Electrical Parameters	MCA	A	0.50	0.50	0.67	0.67	0.78	0.78	1.17
	MOP	A	15						
Airflow Rate		CFM	247/230/215/201/184/170	247/230/215/201/184/170	318/286/257/237/208/184	318/286/257/237/208/184	424/381/332/286/240/194	477/441/396/353/311/272	636/569/505/434/370/307
Sound Pressure Level		dB(A)	28/27/26/24/23/21	28/27/26/24/23/21	35/32/32/30/26/23	35/32/32/30/26/23	35/32/32/30/26/23	35/32/30/28/25/23	38/36/35/33/31/24
Static Pressure Range		in. WG	0.04 (0.04 - 0.12-0.20)						
Dimensions (H x W x D)		in.	7.56x27.56x17.52	7.56x27.56x17.52	7.56x27.56x17.52	7.56x27.56x17.52	7.56x35.83x17.52	7.56x46.45x17.52	7.56x46.45x17.52
Weight		lbs.	35.3	35.3	37.5	37.5	44.1	52.9	52.9
Connection Pipe Diameter	Liquid	in.	1/4	1/4	1/4	1/4	1/4	1/4	3/8
	Gas	in.	1/2	1/2	1/2	1/2	1/2	5/8	5/8
	Drain		VP25						

Accessories Low Static Pressure Ducted Unit											
Wired Controllers			Wireless Controller	Central Controller	Receiver Kit	Motion Sensor	Humidity Sensor	WIFI Adapter	Bacnet	CH-Checker	Shut-Off Box
SPWT-A01	SPWT-B01	SPWT-WG01	SPRC-101	SPCC-D10	SPWRK-V02	SPHNS-S01E	SPHDS-S01E	SPHM-64M	SPBN-H160	SPHCH-64	SPRSOB-RS15

# SLIM DUCTS

## HIGH STATIC PRESSURE



# AIR HANDLER UNITS

## MULTI POSITION AHU

Model Name			CHV-RS07SDHSP	CHV-RS09SDHSP	CHV-RS12SDHSP	CHV-RS15SDHSP	CHV-RS19SDHSP	CHV-RS24SDHSP
Capacity	Cooling	Btu/h	7,500	9,600	12,300	15,400	19,100	24,200
	Heating	Btu/h	8,500	10,900	13,700	17,100	21,600	27,400
Input Power		W	40	40	55	55	55	82
Power Supply		V/Ph/Hz	208-230V / 1Ph / 60Hz					
Electrical Parameters	MCA	A	0.45	0.45	0.74	0.74	0.74	0.94
	MOP	A	15					
Airflow Rate		CFM	318/283/240/ 222/205/187	318/283/240/ 222/205/187	424/388/353/ 318/283/254	424/388/353/ 318/283/254	512/459/406/ 371/335/307	671/600/530/ 459/388/335
Sound Pressure Level		dB(A)	30/27/23/21/20/19	30/27/23/21/20/19	35/33/32/28/26/24	35/33/32/28/26/24	33/30/27/25/23/22	36/34/31/28/24/22
Static Pressure Range		in. WG	0.12/0.16/0.20/0.24/0.28/0.32/0.36/0.40/0.44/0.48/0.52/0.56/0.60					
Dimensions (H x W x D)		in.	10.63x28.55x28.34	10.63x28.55x28.34	10.63x28.55x28.34	10.63x28.55x28.34	10.63x38.55x28.34	10.63x28.55x28.34
Weight		lbs.	53	53	53	53	66	66
Connection Pipe Diameter	Liquid		1/4					
	Gas	in.	1/2				5/8	
	Drain		VP25					

Model Name			CHV-RS30SDHSP	CHV-RS38SDHSP	CHV-RS48SDHSP	CHV-RS54SDHSP
Capacity	Cooling	Btu/h	30,800	38,000	48,000	54,500
	Heating	Btu/h	34,200	42,500	54,500	61,500
Input Power		W	100	132	180	223
Power Supply		V/Ph/Hz	208-230V / 1Ph / 60Hz			
Electrical Parameters	MCA	A	0.89	1.16	1.51	2.55
	MOP	A	15			
Airflow Rate		CFM	883/812/742/ 671/600/530	989/883/812/ 742/671/600	1254/1148/1042/ 936/830/724	1377/1254/1095/ 936/830/770
Sound Pressure Level		dB(A)	34/32/30/28/25/22	37/35/31/29/26/23	38/36/34/31/29/26	41/38/35/33/30/27
Static Pressure Range		in. WG	0.20/0.24/0.28/0.32/0.36/0.40/0.44/0.48/0.52/0.56/0.60/0.64/0.68/0.72/0.76/0.80			
Dimensions (H x W x D)		in.	11.8x46.27x31.5	11.8x46.27x31.5	11.8x58.08x31.5	11.8x58.08x31.5
Weight		lbs.	92	92	125	125
Connection Pipe Diameter	Liquid		3/8			
	Gas	in.	5/8			
	Drain		VP25			

Accessories High Static Pressure Ducted Unit									
Wired Controllers			Wireless Controller	Central Controller	Receiver Kit	Motion Sensor	Humidity Sensor	WIFI Adapter	Drain Pump
SPWT-A01	SPWT-B01	SPWT-WG01	SPRC-101	SPCC-D10	SPWRK-V02	SPHNS-S01E	SPHDS-S01E	SPHM-64M	SPIDP-DHP07/24-27/54-76/96

Drain Pump	Bacnet	CH-Checker	Shut-Off Box	
SPEDP-DHP07/54	SPBN-H160	SPHCH-64	SPRSOB-RS15	<ol style="list-style-type: none"> <li>The nominal cooling capacity is the combined capacity of the Cooper&amp;Hunter standard split system. Cooling Operation Conditions Indoor Air Inlet Temperature: 80°F DB, 66°F WB, Outdoor Air Inlet Temperature: 95°F DB, Heating Operation Conditions Indoor Air Inlet Temperature: 68°F DB, Outdoor Air Inlet Temperature: 44°F DB, 42°F WB, Piping Length: 24.6ft, Piping Lift: 0ft</li> <li>The sound pressure level is based on following conditions: 4.9ft Beneath the Unit, With Discharge Duct(6.5ft.) and Return Duct(3.3ft.). Voltage of the power source for the indoor fan motor is 208V. The above data was measured in an anechoic chamber so that reflected sound should be taken into consideration in the field.</li> <li>The data for external pressure *1)indicates Standard Pressure Setting values when a filter is not used.</li> <li>The actual appearance of outdoor units may differ from photos.</li> <li>Specifications are subject to change without notice.</li> </ol>

## KEY FEATURES

- Multi positioning installation is able to fit in different type of projects and room structures.
- 100% copper pipe
- Low noise DC Fan Motor
- Optional electric heater
- Built-in R32 refrigerant sensor.
- A variety of alarm signal outputs; PCB output alarm signal to alarm, Wired controller alarm.
- The unit can be connected to a third-party heat source.
- Built-in 24v thermostat interface.
- Convenient cleaning and replacement, filter is removed without tools



Model Name			CHV-RS09MPAHU	CHV-RS12MPAHU	CHV-RS18MPAHU	CHV-RS24MPAHU	CHV-RS36MPAHU	CHV-RS48MPAHU	CHV-RS60MPAHU
Capacity	Cooling	Btu/h	9,000	12,000	18,000	24,000	36,000	48,000	60,000
	Heating	Btu/h	10,000	14,000	20,000	27,000	40,000	54,000	66,000
Power Supply		V/Ph/Hz	208-230V/ 1Ph / 60Hz						
Electrical Parameters	MCA	A	2.35	2.35	5.94			7.81	7.81
	MOP	A	15	15	6.48			15	15
Airflow Rate		CFM	375	375	611/580/550/ 518/488/457	611/580/550/ 518/488/457	1139/1091/1013/ 928/849/770	1299	1954
Sound Pressure Level		dB(A)	39	39	41/41/38/37/36/34	41/41/38/37/36/34	54/52/50/49/47/45	50	58
Dimensions (H x W x D)		in.	36.03X17.72X21.06	36.03X17.72X21.06	46x19.63x21.63	46x19.63x21.63	46x19.63x21.63	53.94x22.05x24.17	53.94x22.05x24.17
Weight		lbs.	114.6	114.6	140.8	140.8	147.4	206.8	206.8
Connection Pipe Diameter	Liquid		1/4	1/4	3/8	3/8	3/8	5/8	5/8
	Gas	in.	1/2	1/2	5/8	5/8	5/8	3/8	3/8
	Drain		NPT3/4	NPT3/4	1 1/4 (VP16)			NPT3/4	NPT3/4

Accessories MAHU							
Wired Controllers			Wireless Controller	Central Controller	Receiver Kit	Motion Sensor	WIFI Adapter
SPWT-A01	SPWT-B01	SPWT-WG01	SPRC-101	SPCC-D10	SPWRK-V02	SPHNS-S01E	SPHM-64M

Drain Pump	Bacnet	CH-Checker	Shut-Off Box	
SPEDP-DHP07/54	SPBN-H160	SPHCH-64	SPRSOB-RS15	<ol style="list-style-type: none"> <li>The nominal cooling capacity is the combined capacity of the Cooper&amp;Hunter standard split system. Cooling Operation Conditions Indoor Air Inlet Temperature: 80°F DB, 66°F WB, Outdoor Air Inlet Temperature: 95°F DB, Heating Operation Conditions Indoor Air Inlet Temperature: 68°F DB, Outdoor Air Inlet Temperature: 44°F DB, 42°F WB, Piping Length: 24.6ft, Piping Lift: 0ft</li> <li>The sound pressure level is based on following conditions: 4.9ft Beneath the Unit, With Discharge Duct(6.5ft.)and Return Duct(3.3ft.). Voltage of the power source for the indoor fan motor is 208V. The above data was measured in an anechoic chamber so that reflected sound should be taken into consideration in the field.</li> <li>The data for external pressure *1)indicates Standard Pressure Setting values when a filter is not used.</li> <li>The actual appearance of outdoor units may differ from photos.</li> <li>Specifications are subject to change without notice.</li> </ol>



### SPWT-A01



### SPWT-B01



### SPWT-WG01



### SPRC-101



#### Wired Controllers

- Cool/Heat/Auto/Dry/Fan
- Air filter cleaning reminder
- Fan speed control
- 1°F temperature setting
- 3D airflow customization
- 72-hour timer
- Backlight control
- Up to 16 indoor units can be connected
- Error code display
- Built-in temperature sensor
- Dehumidification
- Check function
- One touch test run
- Self cleaning
- Multiple speeds
- Swinging louvers

- Cool/Heat/Auto/Dry/Fan
- Fan speed control
- 24-hour timer
- Check function
- Error code history display
- PCB inspection indoor/outdoor
- Backlight control
- Wireless control available
- Breeze mode
- Eco mode (energy saving mode)
- Sleep mode
- 3D airflow customization
- Dehumidification
- Performance monitoring
- Air filter cleaning reminder
- Automatic test run
- Self-diagnosis function
- Built-in temperature sensor
- Individual louver control
- Quiet mode / silent mode
- Self-cleaning

- Cool/Heat/Auto/Dry/Fan
- Fan speed control
- 24-hour/7-Day timer
- Check function
- Error code history display
- PCB inspection indoor/outdoor
- Backlight control
- Wireless control available
- Breeze mode
- Eco mode (energy saving mode)
- Sleep mode
- 3D airflow customization
- Dehumidification
- Performance monitoring
- Air filter cleaning reminder
- Automatic test run
- Self-diagnosis function
- Built-in temperature sensor
- Individual louver control
- Quiet mode / silent mode
- Self-cleaning

#### Wireless Controller

- Performance monitoring
- Automatic test run
- Fan speed control
- Backlight control
- Individual louver control
- Sleep mode
- 3D airflow customization
- Fan speed control
- 24-hour timer
- Self-diagnosis function
- Built-in temperature sensor
- Breeze mode
- ECO (energy saving mode)
- Sleep mode
- Self-cleaning function

#### Wireless Receiver Kit

- SPWRK-T03
- SPWRK-Z01
- SPWRK-V02
- SPWRK-X01H



#### Central Controller

- 10 in. touch screen with 1280x800 resolution
- Max of 160 IDU connections
- Max 64 connectable IDU Groups
- VRF and ATW System control
- Weekly / Holiday schedule
- Remote control with web access
- Rotation operation control for equipment room
- Password setting
- External I/O ports
- Multi language



#### Remote Receiver

### SPWRK-X01H



### SPWRK-T03



### SPWRK-Z01



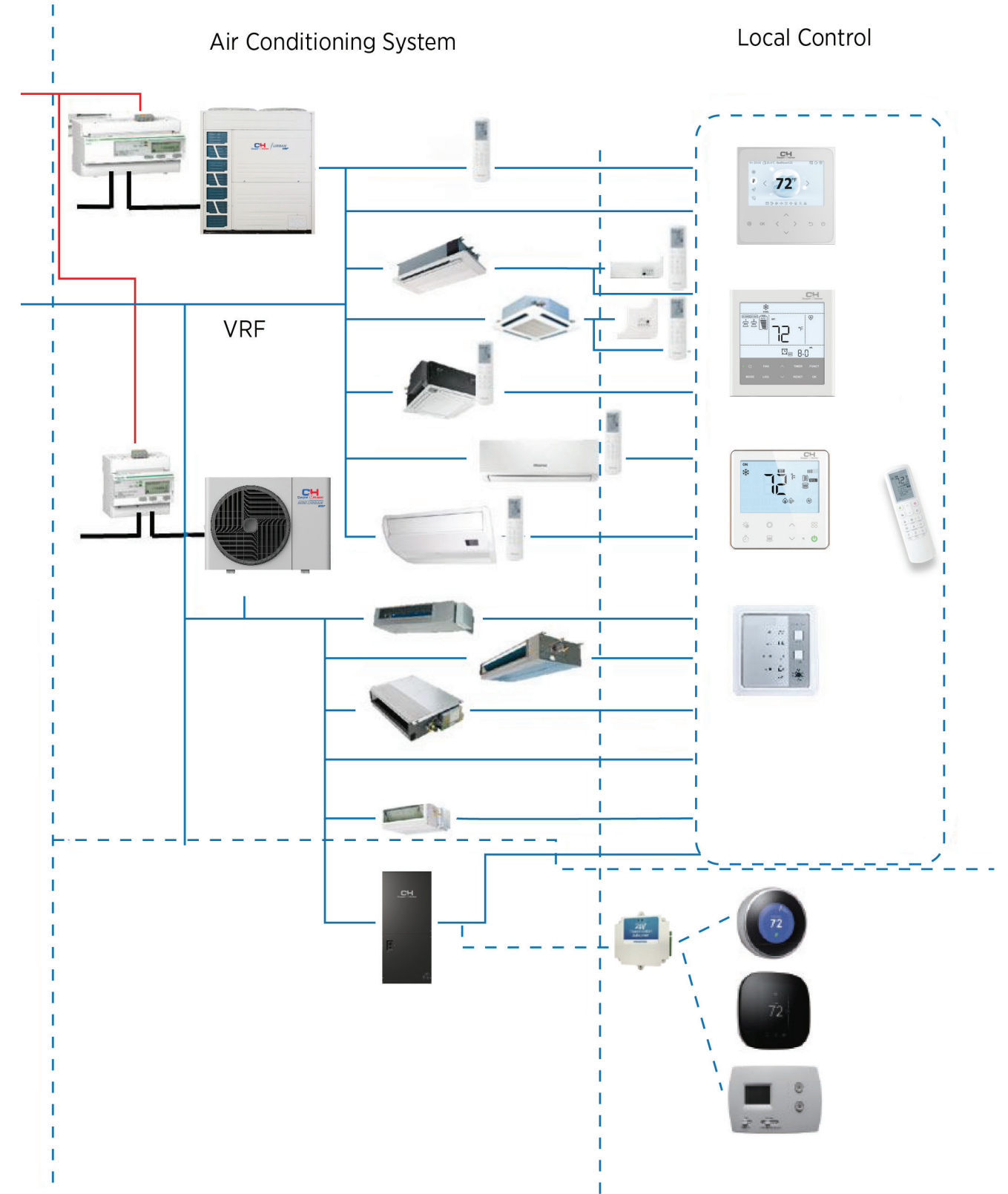
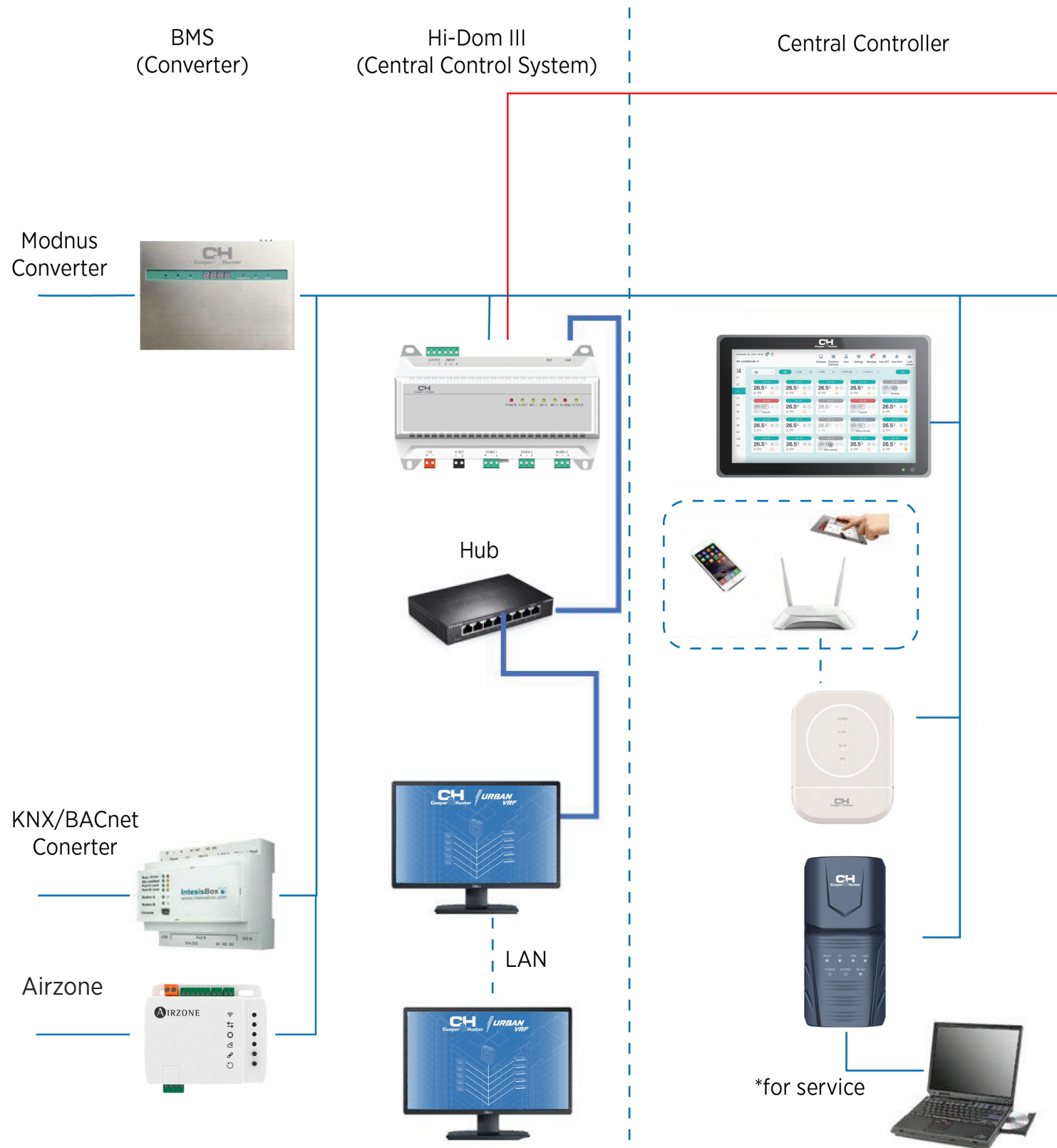
### SPWRK-V02

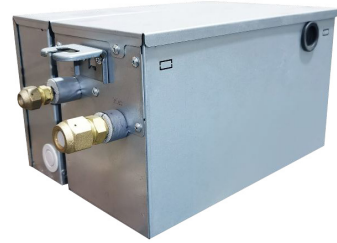


#### CHV Adapter

### SPHM-64M







### Shut-Off Box

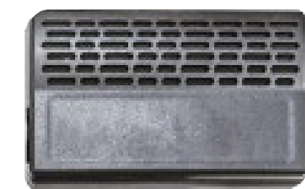
- Capacity: 10HP
- Max. 17 IDUs for 1 port
- Be closed automatically when power off
- 6000pls/33/64 in. valve for gas pipe and 3000pls/15/64 in. valve for liquid pipe

Model		SPRSOB-RS15	
Application Scenarios		Two Pipe Refrigerant Shut-off Box	
Power Supply		208-230V - 60Hz	
Power Consumption	W	9.2	
Number of Ports for IDU		1	
Max Total Capacity of all connected IDUs		kBTU/h	<96
Single Refrigerant Shut-off Box in same refrigerant system	Max number of connected IDUs per box	-	13
Multiple Refrigerant Shut-off Boxes in same refrigerant system	Max number of connected IDUs per box	-	8
Indoor Unit	Gas Pipe	in.	5/8
	Liquid Pipe	in.	3/8
Dimensions	HxWxD	in.	8.26x 14.96x 8.42
Net Weight		lbs.	18.3
Refrigerant		type	R32
Running Current		A	0.14
Recommended Fuse/Breaker size		A	10
Max Fuse size		A	15



### Refrigerant Detector

Model		SPRD-RS01	
Detectable Refrigerant		R32	
Power Supply		IDU or Power Adapter (Output Current ≥1A)	
Rated Voltage	V	DC 12±10%	
Detected Threshold Value	ppm	5000	
Operating Temperature Range	°F	-4-140°F	
Operating Humidity Range	RH	5-95% (non-condensing)	
Average Power Consumption	mA	100	
Dimensions (WxDxH)	in.	3.23x3.23x.87	
Net Weight	oz.	2.68	
Connecting Cable Specifications	AWG	19	
Max Cable Length Between IDU and Refrigerant Detector	ft.	32.80	

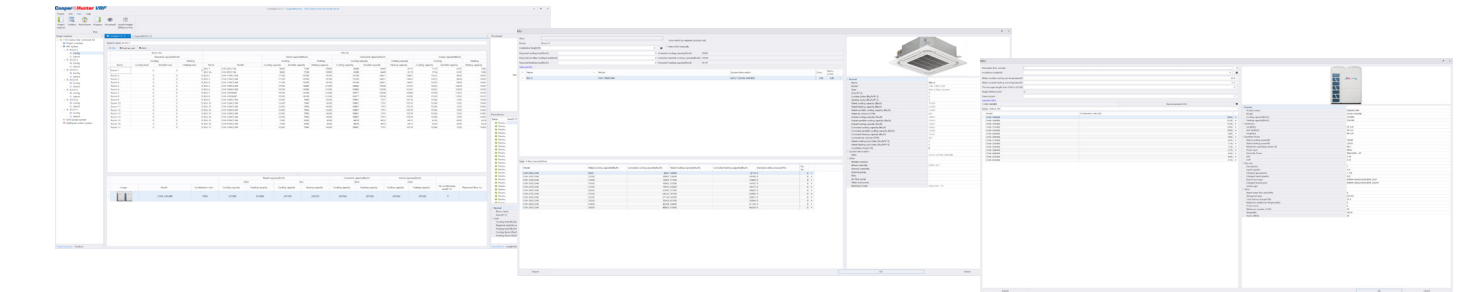
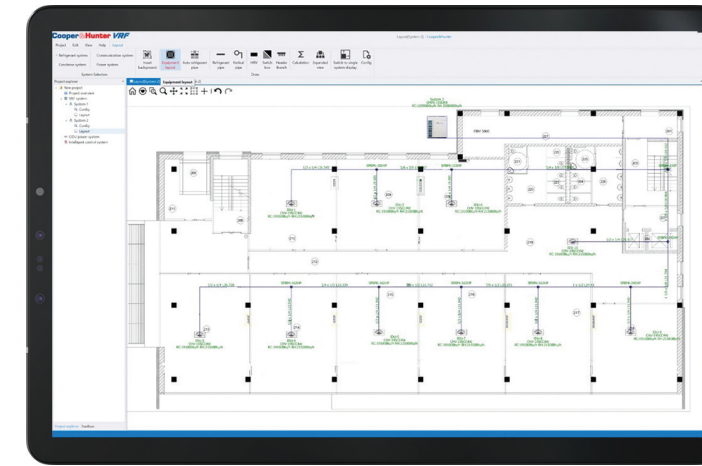


### Refrigerant Sensor

- Built-in installation
- Infrared NDIR detection
- Powered by 12±10% VDC from IU or reserved dedicated power supply port
- Alarm value 5000ppm
- Dry contact reserved
- Design life ≥10 years

Item		SPRS-RS02	
Detectable Refrigerant		R32	
Power Supply		Indoor Unit	
Rated Voltage	V	DC 12±10%	
Detected Threshold Value	ppm	5000	
Operating Temperature Range	°F	-4-185°F	
Operating Humidity Range	RH	0-95% (non-condensing)	
Average Power Consumption	mA	45	
Dimensions (WxDxH)	in.	2.38x0.74x2.44 in	
Net Weight	oz.	2.5	

## VRF SELECTION SOFTWARE



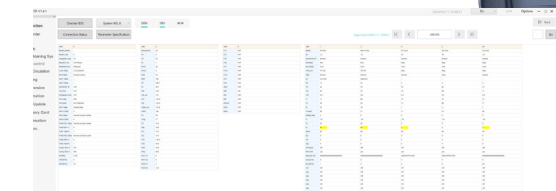
C&H Selection Software can be used to create projects of any complexity, mixing and matching Cooper&Hunter's VRF equipment to create the perfect personalized system. Unit compatibility can be conveniently calculated on any Windows PC device.

C&H Selection Software does not only ensure system compatibility and provide easy access to reference important project details, but can also automatically generate system suggestions, connection pipe lengths, and detailed project reports. Users are also able to upload blueprints and project plans into the program to configure their project directly on the digital copy and avoid drawing by hand.

## CH-CHECKER

CH-Checker is a plug and play service tool, with which service engineers can access the VRF system to monitor operation status and get data pertaining to each of the units. It is very convenient for system communication and maintenance, and features cloud-based management with easy to access operation status remotely.

- Compact size allows high portability and space saving.
- Capable to slot in a 32G memory card for data collection and storage.
- Memory card and card reader are standard with CH-Checker.
- Multiple choices of power supply types. It can be powered by the standard adapter (DC 5V), computer or power bank.
- Support OTA update, ensuring the software is always up to date.



### An Intelligent Tool for Intelligent Service.

- Conventional connection type. The simplest and most reliable way to connect the CH-Checker to your computer is directly through USB.
- Internet connection type. Connect to a stable Wi-Fi signal to achieve operation data and status monitoring anytime and anywhere.
- Hotspot connection type. Connect to a temporary hotspot signal from the smartphone, allowing the CH-Checker to remotely monitor the operation data when there is no stable Wi-Fi signal on site.
- SD card storage type. CH-Checker equipped with SD card can be connected to the air conditioning system all the time, so that all the operation data can be stored in the card for later analysis.





[cooperandhunter.us](http://cooperandhunter.us)